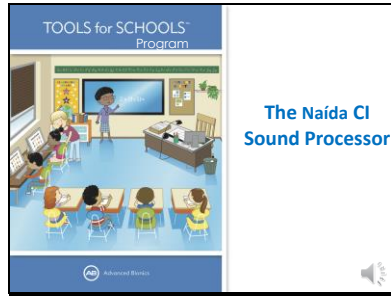
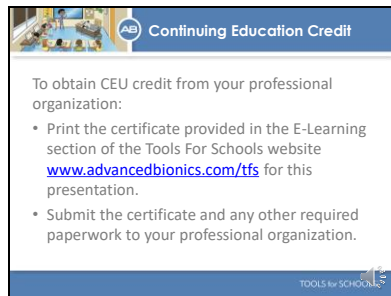


Slide 1



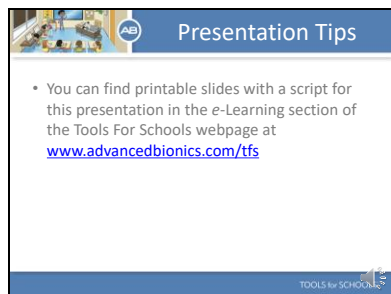
Hello and thanks for joining us to learn more about cochlear implants. Today's presentation provides a basic overview of the Naida sound processor. It is the first part of a two-part presentation.

Slide 2



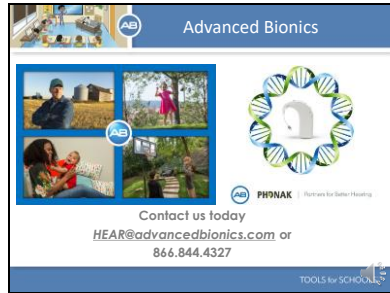
If you would like to submit for continuing education credits to your professional organization please print out the certificate of completion provided at the Tools for Schools website under eLearning for this presentation. Submit the certificate with any other required information to your professional organization.

Slide 3



If you would like to print out slides and take notes, or print out a script so you can follow along with the audio, please visit the companion materials section for this presentation in the e-learning section of the TFS webpage.

Slide 4



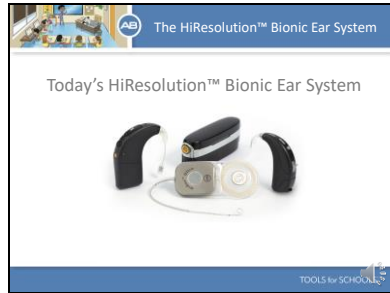
Advanced Bionics is dedicated to helping people with hearing loss hear their best. AB has partnered with Phonak. This partnership has allowed AB to offer unique technological advances to help people with hearing loss hear better in even the most challenging listening situations. From offering technologies that grow with children as they learn to listen and make sense of the world of sound... To helping adults get back to connecting and communicating with the important people in their lives, AB is dedicated to providing the unique hearing technologies that can help recipients achieve their hearing goals.

Slide 5



These are the topics we are going to discuss today. The Nadia sound processor, processor basics, steps for everyday use, and connectivity.

Slide 6



Here is today's HiResolution Bionic Ear System. The HiResolution Bionic Ear System includes the HiRes Ultra Implant that is surgically implanted and the external sound processors that are worn on the head or the body. AB offers two sound processors: The Naída CI or the freestyle™ waterproof processor, Neptune™. Today we are going to focus on the Naída CI.

Slide 7



Let's start by reviewing the components of the Naída CI.

- Here is the Naida Processor.
- At the bottom of the processor is the power source. Here you can see the Universal Headpiece (UHP) and the headpiece cable.
- The round button located near where the UHP attaches to the processor is the Program Button.
- The Volume Control is located directly above.
- You can see here that the Naida's LED is located in the center of the volume control.
- There are also several microphones on the Naida processor. The front and rear microphone as well as the T-Mic and headpiece mic.

Slide 8

What you will learn today

- The Naída CI Sound Processor
- **Processor Basics**
- Steps for Everyday Use
- Connectivity

TOOLS for SCHOOLS

Let's review some basic information about how the Naída works.

Slide 9

Processor Basics

Program Button

- Stores up to five (5) programs
- The number of GREEN blinks displayed on the LED indicates which program is in use
- The program button can be disabled by the child's audiologist

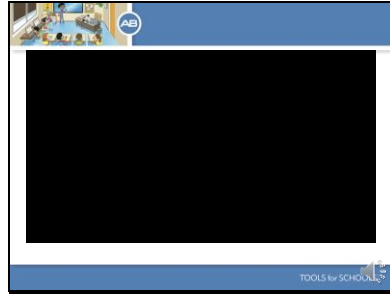
Program Button

TOOLS for SCHOOLS

Here you can see the Program Button.

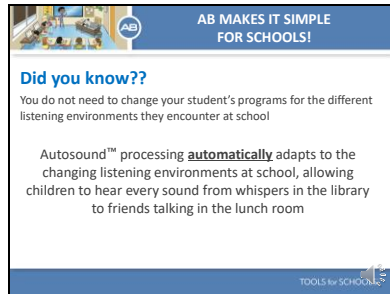
- The Naída Stores up to five (5) programs
- Push the program button down briefly and then release the button to change programs
- The number of GREEN blinks displayed on the LED indicates which program is in use
- The programs switch in a chronological order.
- The program button can be disabled by the child's audiologist which keeps little hands from changing programs by accident.

Slide 10



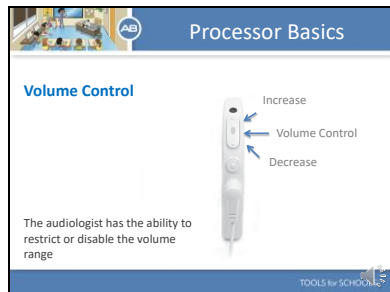
Let's watch a short clip on how to operate the Program Button.

Slide 11



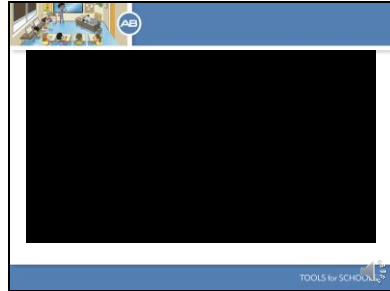
Did you know you do not need to change your student's programs for the different listening environments they encounter at school. Autosound™ processing **automatically** adapts to the changing listening environments at school, allowing children to hear every sound from whispers in the library to friends talking in the lunch room

Slide 12



Here you can see the volume control. To increase the volume gently push the top of the volume control. To decrease the volume gently push the bottom of the volume control. Restricting or disabling the volume control prevents accidental changes in loudness (either too soft or too loud), which could compromise the child's hearing

Slide 13



Let's watch a short clip on how to operate the volume control.

Slide 14

AB MAKES IT SIMPLE FOR SCHOOLS!

Did you know??

The Naída CI will always default to program 1 at the child's standard volume setting when it is powered on.

If P1 with standard volume is the child's everyday program no setting changes are necessary to the Naída CI after the battery is attached!

TOOLS for SCHOOLS

Did you know the Naída CI will always default to program 1 at the child's standard volume setting when it is powered on? If P1 with standard volume is the child's everyday program no setting changes are necessary to the Naída CI after the battery is attached!

Slide 15

Processor Basics

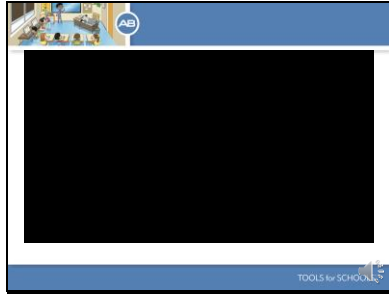
The Universal Headpiece (UHP) and Headpiece Cable

- Transmits power to the internal implant
- Contains a microphone

TOOLS for SCHOOLS

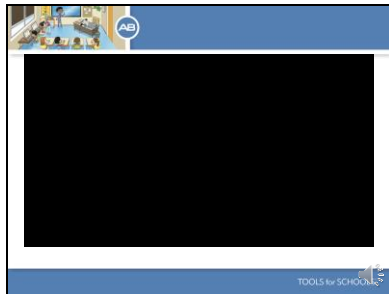
The Universal Headpiece or UHP transmits power to the internal implant. It contains a microphone which, when activated, picks up sound from the environment and transfers it to the Naída CI. It is covered by a Color Cap, which snaps securely in place. Cables come in a variety of colors and lengths to suit all needs

Slide 16



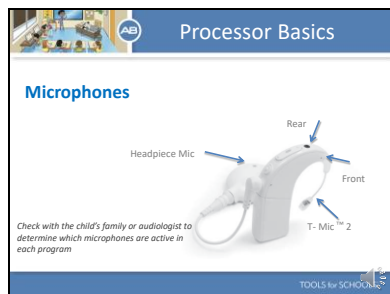
Let's watch a short clip that shows you how to assemble the UHP and cable.

Slide 17



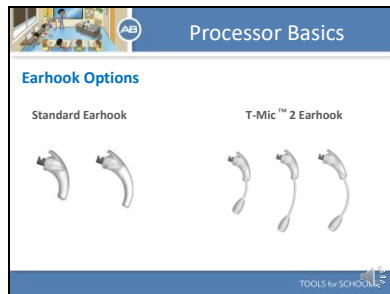
Now let's watch a short clip that shows you how to attach the UHP and cable to the Naida processor.

Slide 18



Did you know the Naida CI has four microphone options on one processor? This graphic identifies the locations of the various microphone inputs. Front, Rear, T-Mic 2, and the Headpiece Mic. The microphones can be used in different combinations in any given program depending on what the audiologist has chosen. Check with the child's family or audiologist if you have questions about microphone usage and what microphones are active for a particular student.

Slide 19



There are 2 options for earhooks with the Naída CI. There is the standard earhook for retention on the ear which comes in a small and large size. There is also the T-mic 2 earhook. This is a special earhook with a microphone at the bottom that is placed at the entrance to the ear canal. This strategic placement utilizes the outer ear's natural sound-gathering capabilities, just like normal-hearing ears.

Slide 20



There are a variety of power options available for the Naída CI. There are several rechargeable PowerCel options. The 110 mini PowerCel is the smallest. There are 2 disposable battery options: The Zinc Air battery pak cartridge which is used with 2 675 high powered Zn-Air CI batteries or the AAA PowerPak which uses 3 AAA batteries.

Slide 21

BATTERY LIFE	PowerCel 110 mini	PowerCel 170 mini	PowerCel 170	PowerCel 250	Zinc Air
Average (Hrs.)	12	18	18 (12 w/ B OM)	25	31
Range (Hrs.)	17	27	27	34	54

Here you can see average operating times for the various battery options. In general, our smallest option lasts about 12 hours.

Slide 22

Wearing Options

Naida CI Power Adapter AAA PowerPak Accessory Naida CI Clips

Here you see options for wearing the Naida either completely off the ear or with the battery supply off the ear. This is great for babies and active young children.

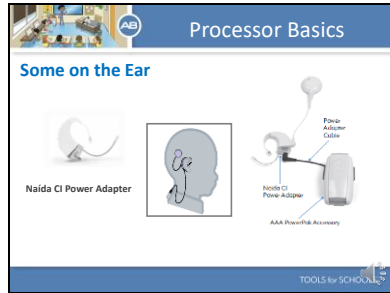
Slide 23

Nothing on the Ear

Naida CI Clip

For the NONE ON THE EAR option you will need to use the Naida CI clip and a long headpiece cable.

Slide 24



To use the SOME ON THE EAR option you will need the Naida Power Adapter and appropriate cable.

Slide 25



Here is a short clip that shows you how to set up the SOME ON THE EAR option.

Slide 26



Finally, before we move on I want to talk about the Aqua Case. Everyone loves the pool and the beach and with use of the AB's Aqua Case and Aqua Mic the Naida is completely waterproof. Here you can see the processor is placed in our special Aqua Case and worn on the body with a band or clip. Kids can be kids and still hear everything around them.

Slide 27

What you will learn today

- The Naída CI Sound Processor
- Processor Basics
- **Steps for Everyday Use**
- Connectivity

TOOLS for SCHOOLS

Now let's talk about steps for everyday use.

Slide 28

Steps for Everyday Use

1. Turn on processor
2. Confirm the UHP and headpiece cable are firmly connected to the Naída CI
3. Verify the correct program is selected
4. Verify the volume is on the proper setting
5. Place the Naída CI on the child in the child's preferred wearing style
6. Ensure the UHP is positioned over the internal implant
7. Perform a behavioral listening check

TOOLS for SCHOOLS

- Turn on processor
- Confirm the UHP and headpiece cable are firmly connected to the Naída CI
- Verify the correct program is selected
- Verify the volume is on the proper setting
- Place the Naída CI on the child in the child's preferred wearing style
- Ensure the UHP is positioned over the internal implant
- Perform a behavioral listening check

Let's look at each of these steps in more detail.

Slide 29

Steps for Everyday Use

Step 1: Turn on the Naida CI

- Turn on the Naida CI by sliding on a fully charged battery
- The LED will flash ORANGE to indicate battery status
- 3-4 ORANGE blinks indicates the battery is sufficiently charged to power the Naida CI
- The ORANGE blinks will be followed by 1 quick GREEN blink to indicate the Naida CI is in program 1
- To turn off the Naida CI remove the battery

Attach Battery

LED

TOOLS for SCHOOLS

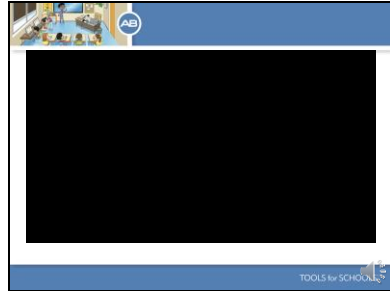
The Naida CI is turned 'on' when a charged battery is attached to the processor. There is no on and off button. When the battery is placed the first thing you will see is the orange LED flash. Again, the LED is located in the middle of the volume control. The orange flashing indicates battery charge. The orange flashing will be followed by the green flashing. The green LED indicates which program is active. The Naida CI will always power on in Program 1 with the volume and sensitivity at the default settings. To power down the Naida CI, simply remove the battery cartridge.

Slide 30

TOOLS for SCHOOLS

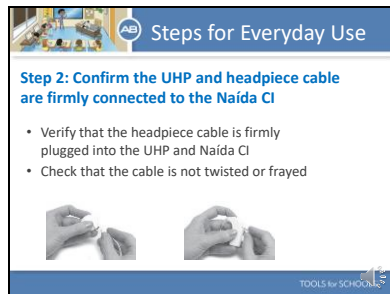
Here is a short video that shows you how to properly slide on and off the battery.

Slide 31



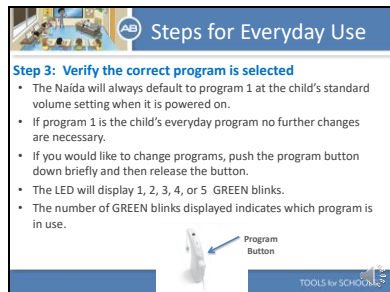
And here is a short video that shows you how the LED behaves when the battery is attached.

Slide 32



Once the battery is placed verify that the headpiece cable is firmly plugged into the headpiece and Naida CI. It is a good idea to check that the cable is not twisted or frayed.

Slide 33



Verifying the correct program is selected on the processor is simple because the Naida will always default to program 1 at the child's standard volume setting when it is powered on. So, if program one is the child's everyday program, which is usually is, no further changes are necessary. If you would like to change programs, push the program button down briefly and then release the button. The LED will display 1, 2, 3, 4, or 5 GREEN blinks. The number of GREEN blinks displayed indicates which program is in use.

Slide 34

Steps for Everyday Use

Step 4: Verify the volume is on the proper setting

- The Naida CI will always default to program 1 with the volume set at the child's standard volume setting when it is powered on.
- If the child is using their standard volume setting no changes to the volume are necessary.
- If you would like to increase the volume, briefly tap the top of the volume control. To decrease the volume, briefly tap the bottom of the volume control.

Volume Control

TOOLS for SCHOOLS

Again, verification of the proper volume setting is easy as the Naida CI will always default to program 1 with the volume set at the child's standard volume setting when it is powered on. So, if the child is using their standard volume setting no changes to the volume are necessary. If you would like to increase the volume, briefly tap the top of the volume control. To decrease the volume, briefly tap the bottom of the volume control.

Slide 35

Steps for Everyday Use

Step 5: Ensure the Naida CI is securely fastened in the child's preferred wearing style

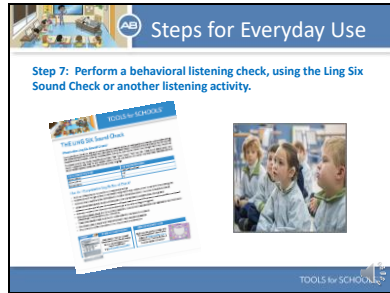
All on the ear Some on the ear None on the ear

Step 6: Place the UHP over the internal implant
You will feel a magnetic attraction

TOOLS for SCHOOLS

Now that you have the processor turned on and have verified the processor is set to the child's proper settings, attach the processor to the child in the preferred wearing configuration. Then attach the UHP to the child's head. You will feel a magnetic pull.

Slide 36



Now that the Naida CI is set and placed on the child, you should always perform a behavioral listening check. A behavioral listening check provides final verification that everything is working correctly and that the child is able to hear.

Slide 37



A simple way to complete a daily listening check is by doing the Ling 6 sound check. If you would like to learn more about this fast and easy behavioral listening check visit the Tools for Schools webpage. We have instruction and fun flash cards you can download and print for free.

